

# MotorGuide®

## REPAIR PARTS

Models: **LAZER II**  
ELECTRIC STEER

**L52ES**  
**LP52ES**  
**AG52ES**

**SPECIFICATIONS:**

Year of Intro	1998
Thrust	52LBS
Volts	12VDC
Amp Draw	0 to 48 amps
Mount	15 Bow Pontoon
Speeds	Variable

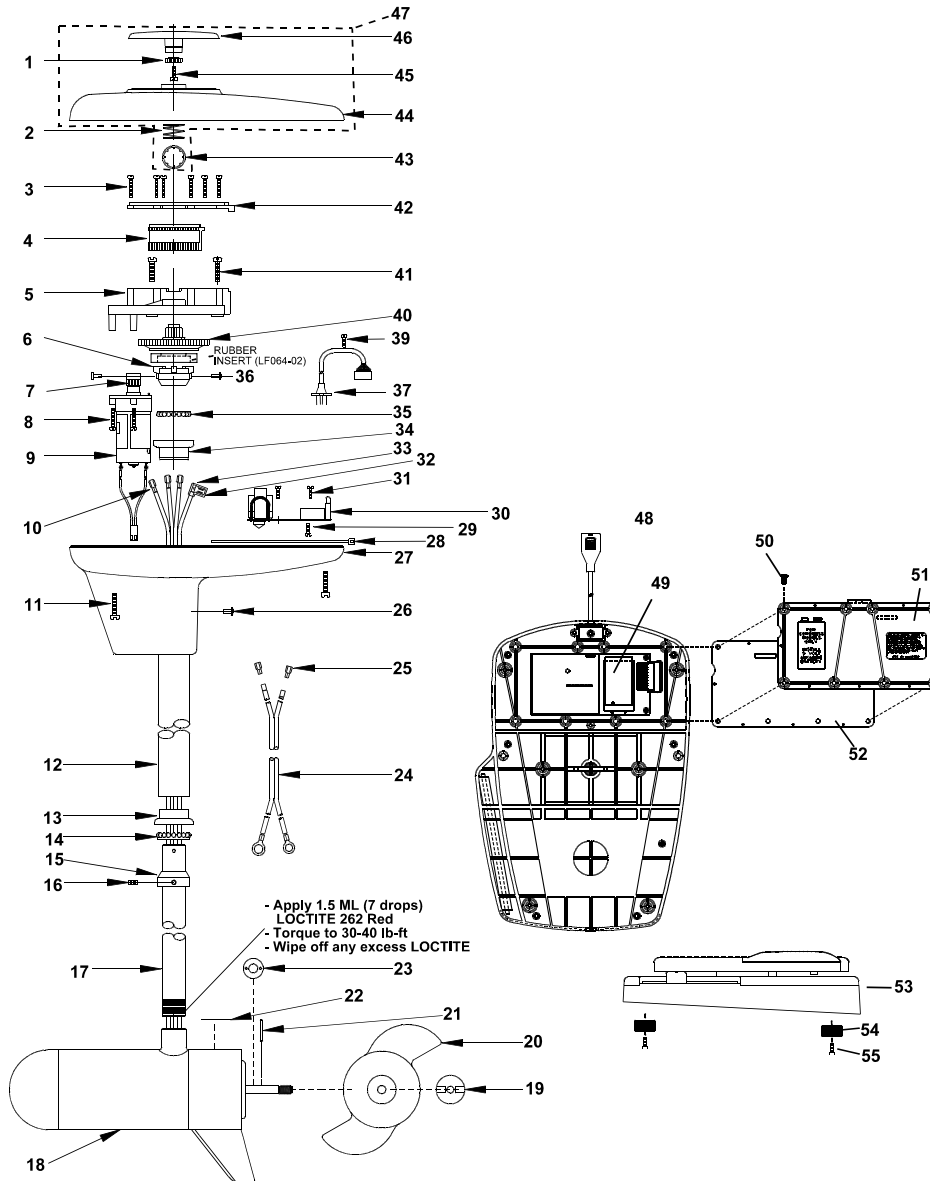
**QUICK REFERENCE PARTS GUIDE:**

MOSFET	JF096-08
Motor Seal Kit	6220

**PARTS ORDERING & TECH ASSISTANCE**

MotorGuide Consumer Relations  
Phone 918-831-6989  
Fax 800-982-8093

*Returned Goods must be accompanied with a Returned Goods Authorization. Contact MotorGuide Consumer Relations to obtain RGA.*

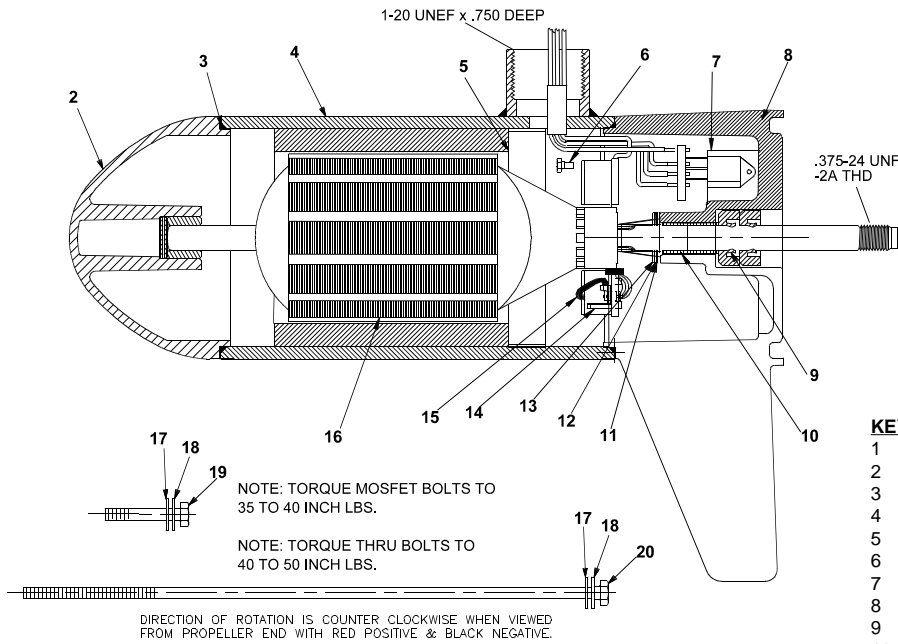


KEY#	PART#	DESCRIPTION	KEY#	PART#	DESCRIPTION	KEY#	PART#	DESCRIPTION
1	LF069-04	LAZER GEAR/INDICATOR	22	LF060-04	LOWER UNIT DECAL LAZER	47	LF053-29	LAZER II GENERIC T/H COVER
2	LF014-01	SPRING/INDICATOR	23	RK171-01	NYLON WASHER .125" THICK	48	LF053-31	AUTOGUIDE GENERIC T/H COVER
3	LF141-02	SCREW #4 X 7/8	24	LF328-01	BATTERY CABLE ASY	49	NP327-03	CONTROL CABLE
4	LF125-01	RACK	25	PM160-01	TERMINAL		NP157-04	LAZER II INTERFACE BD ES
5	LF126-01	RACK GUIDE	26	LF111-02	POP RIVET .126-.187 D6		NP157-06	AUTOGUIDE INTERFACE BOARD ES
6	LF064-01	COLUMN COUPLER	27	LF004-02	T/H BASE	50	XF141-06	#6X32X7/16 SCREW
7	LF068-03	PINION GEAR	28	AF030-01	CABLE TIE	51	NP012-01	LAZER II BATTERY DOOR
8	LF141-02	SCREW #4 X 7/8	29	AF141-01	SCREW, SELF TAPPING	52	NP079-02	LAZER II DOOR GASKET
9	LF3126-01	DRIVE MOTOR ASSY 12V	30	LF157-01	LAZER II 12V ES/RF BOARD	53	NP300-10	LAZER II PEDAL ASY
10	PM160-01	TERMINAL		LF157-06	AUTOGUIDE 12V ES/RF BOARD		NP300-15	AUTOGUIDE ES PEDAL ASY
11	LF141-04	SCREW #8 X 1"	31	AF141-01	SELF TAPPING SCREW	54	XP023-01	FOOT PEDAL PADS
12	AF165-06	(46") OUTER TUBE	32	BR161-03	20-14 FLAG TERMI/STRIP G2	55	XF135-01	SCREW, PAD
	AF165-07	(30") OUTER TUBE	33	AT080-01	INSULATING SLEEVE			
	AF165-08	(36") OUTER TUBE	34	FM007-01	BEARING CUP			
	AF165-01	(13") OUTER TUBE	35	FM005-01	BALL BEARING			
13	FM007-01	RETAINER/ BEARING CUP	36	LF111-01	POP RIVET .376-.500 D6			
14	FM005-01	BEARING	37	LF327-02	HOUSING CABLE			
15	AF006-01	RETAINER/BEARING	38					
16	AF143-01	SET SCREW	39	IR133-01	SELF TAPPING SCREW			
17	LF049-03	36" SS COLUMN	40	LF069-08	COLUMN GEAR/POWDER MET			
	LF049-04	42" SS COLUMN	41	LF141-03	SCREW #8X3/4			
	LF049-05	50" SS COLUMN	42	LF127-01	RACK GUIDE COVER			
	LF049-08	54" SS COLUMN	43	LF098-01	TINNERMAN CLIP			
	LF049-09	60" SS COLUMN	44	LF053-29	LAZER II GENERIC T/H COVER			
18	CF397-06	52 # F/O MOTOR		LF053-31	AUTOGUIDE GENERIC T/H COVER			
19	AR099-01	PROP NUT	45	LF141-06	SCREW #6X1/2 PLASTIC			
20	AF124-10	3.5 NINJA 3 BLADE PROP	46	LF078-09	LAZER INDICATOR			
21	BR102-01	PROP DRIVE PIN						

**PARTS NOT ILLUSTRATED**

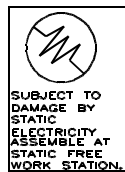
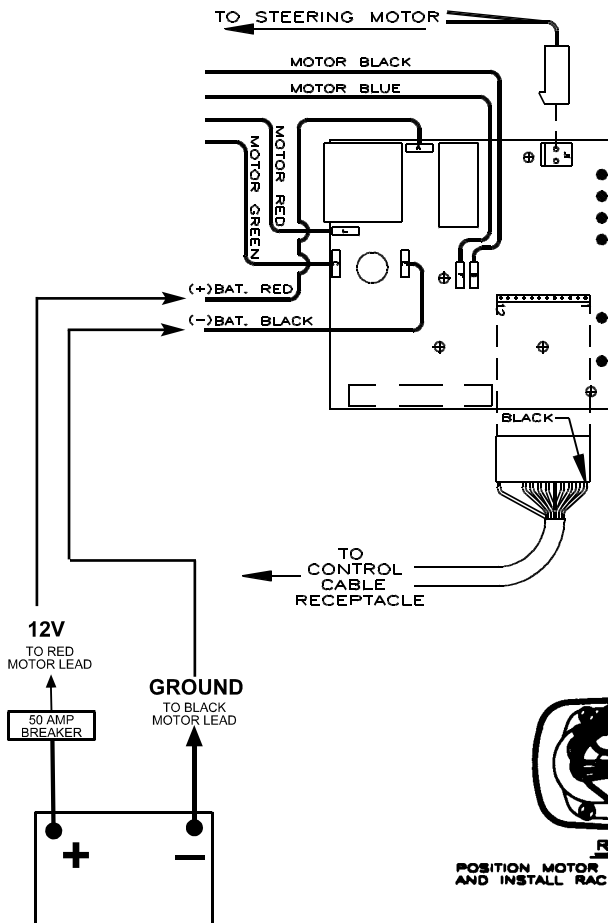
LF078-02	RAISED SECONDARY INDICATOR
LF141-01	SCREW, SECONDARY INDICATOR
LF057-01	INDICATOR DECAL
LF056-24	L52ES TOP HOUSING DECAL
LF056-32	AG52ES TOP HOUSING DECAL

Models:  
**L52ES**  
**LP52ES**  
**AG52ES**



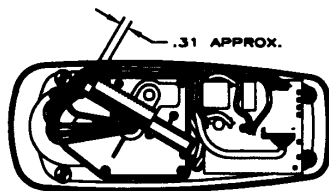
KEY	QTY	DESCRIPTION	PART NO.
1	X	MOTOR	CF397-06
2	1	NOSE CAP	JF3212-04
3	2	O RING SEAL	MR217-01
4	1	HOUSING ASY	JF3210-01
5	1	RETAINER	JF233-01
6	2	BRUSH CARD SCREW	MR228-01
7	1	DURA AMP MODULE	JF096-08
8	1	COMM CAP	JF3205-04
9	2	SHAFT SEAL	MR223-01
10	1	BEARING	MR206-01
11	1	NYLATRON WASHER	MR226-01
12	1	WASHER	MR227-01
13	1	E RING	MR219-02
14	2	BRUSH SPRINGS	MR214-02
15	1	BRUSH ASY LESS SPRING	JF3201-04
16	1	ARMATURE	CF3207-01
17	4	STATIC SEAL	MR222-01
18	4	THRU BOLT WASHER	MR216-01
19	2	DURA AMP SCREW	MR229-02
20	2	THRU BOLT	MR218-02

### WIRING



Lubricate wire exiting pinion with non washout grease and bend wires flat to clear indicator gear teeth.

Battery cable leads to be bent at 90 degrees. Leads must be at or below top of Control electronics board.



**RACK INSTALLATION**  
 POSITION MOTOR IN LINE WITH TOP HOUSING (SEE BELOW) AND INSTALL RACK APPROX. 5/16 FROM END OF TRAVEL

